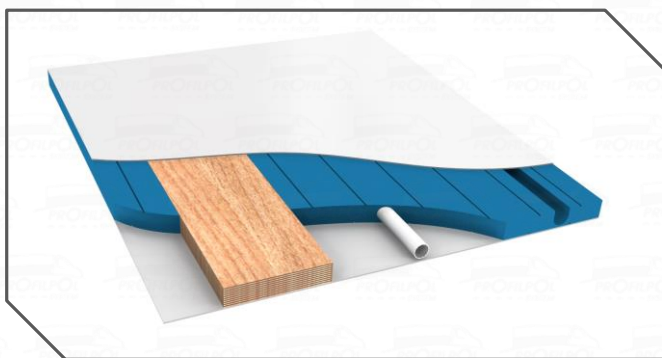
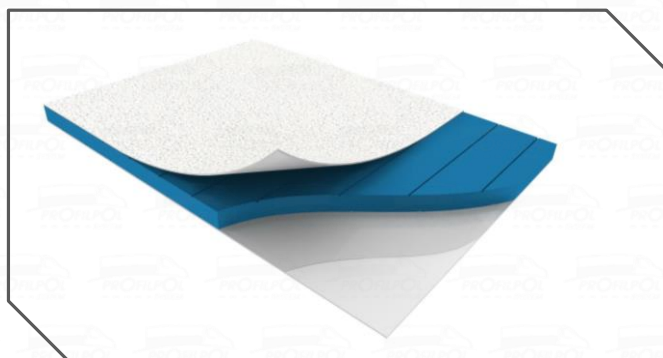
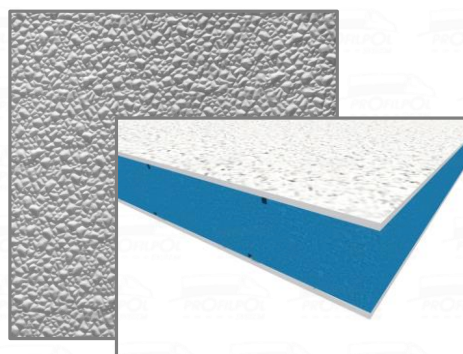
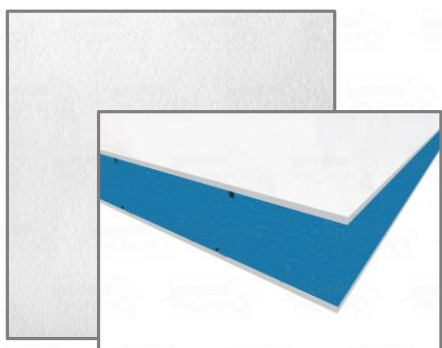




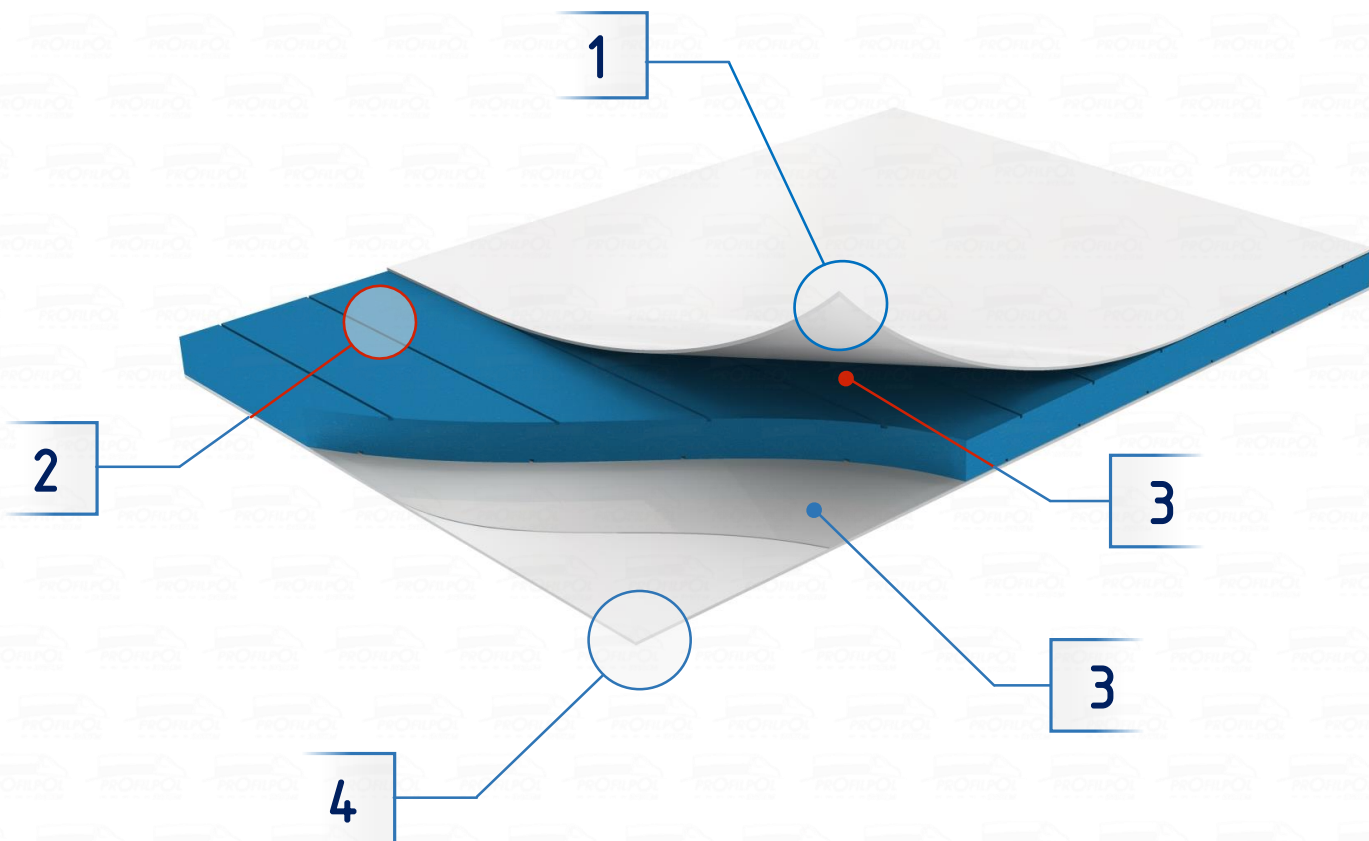
Sandwich panels



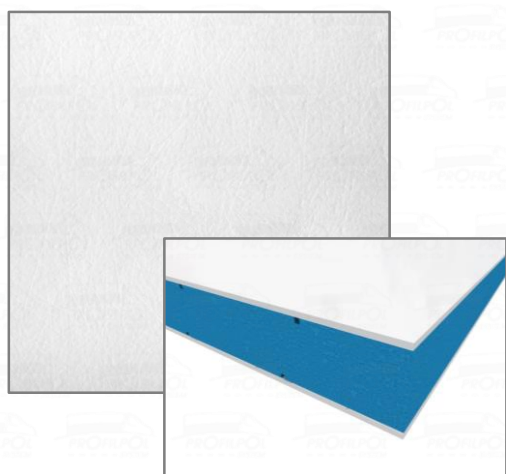
NEW



GLOSS Panels



GLOSS laminate



1

Interior laminate layer

Laminate developed specifically for applications with high visual demands. It has a smooth surface with a slightly visible internal fiber structure. It is covered with a high quality gelcoat that protects the product against UV radiation. The laminate is attested for food contact. Available laminate thickness 1,5 or 2 mm.

2

XPS layer

Extruded polystyrene foam made of a closed cell structure material with good mechanical properties. CO2-foamed product.

3

Glue layer

High quality glue and vacuum bonding are providing durable connection between layers. The preparations for bonding are carried out with highest standards, which guarantees strong connection and even panel surface.

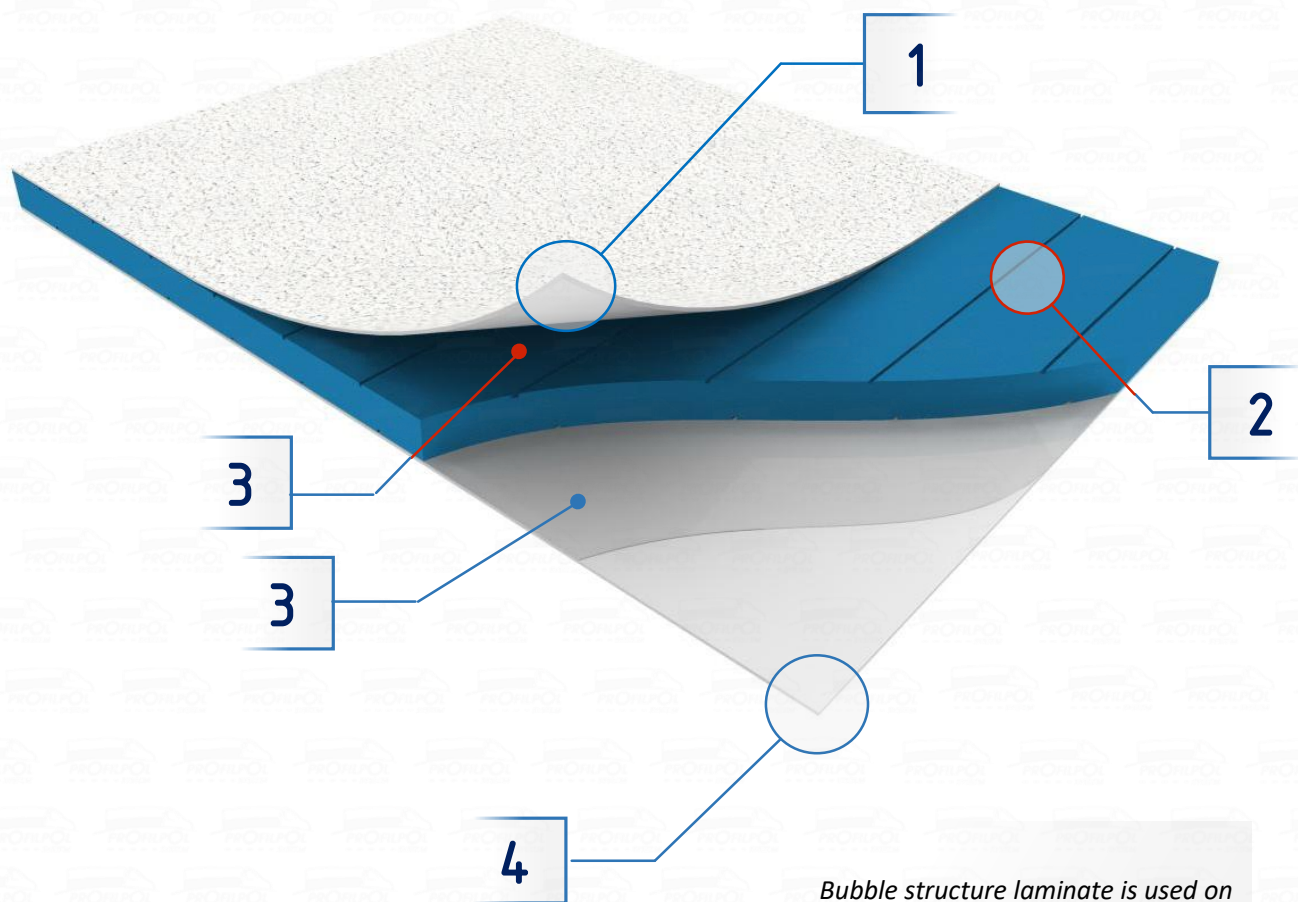
4

Exterior laminate layer

Laminate developed specifically for applications with high visual demands. It has a smooth surface with a slightly visible internal fiber structure. It is covered with a high quality gelcoat that protects the product against UV radiation. The laminate is attested for food contact. Available laminate thickness 1,5 or 2 mm.



Bubble structure panel



Bubble structure laminate is used on the interior side of the panel only.

Interior laminate layer

Polyester-glass laminate with "bubble" surface without gel coat, with additional roving cloth. Laminate not UV resistant- only for interior use. High impact-resistant.

1

XPS layer

Extruded polystyrene foam made of a closed cell structure material with good mechanical properties. CO₂-foamed product.

2

Glue layer

High quality glue and vacuum bonding are providing durable connection between layers. The preparations for bonding are carried out with highest standards, which guarantees strong connection and even panel surface.

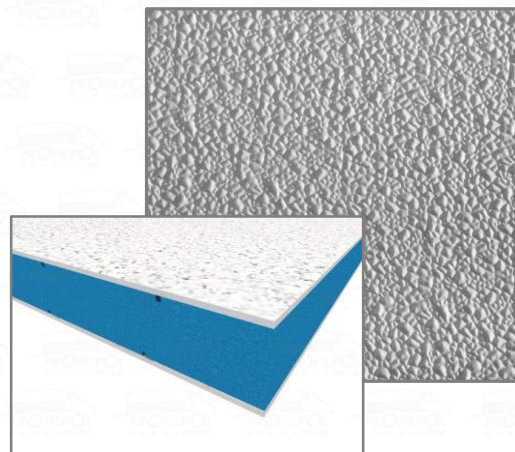
3

Exterior laminate layer

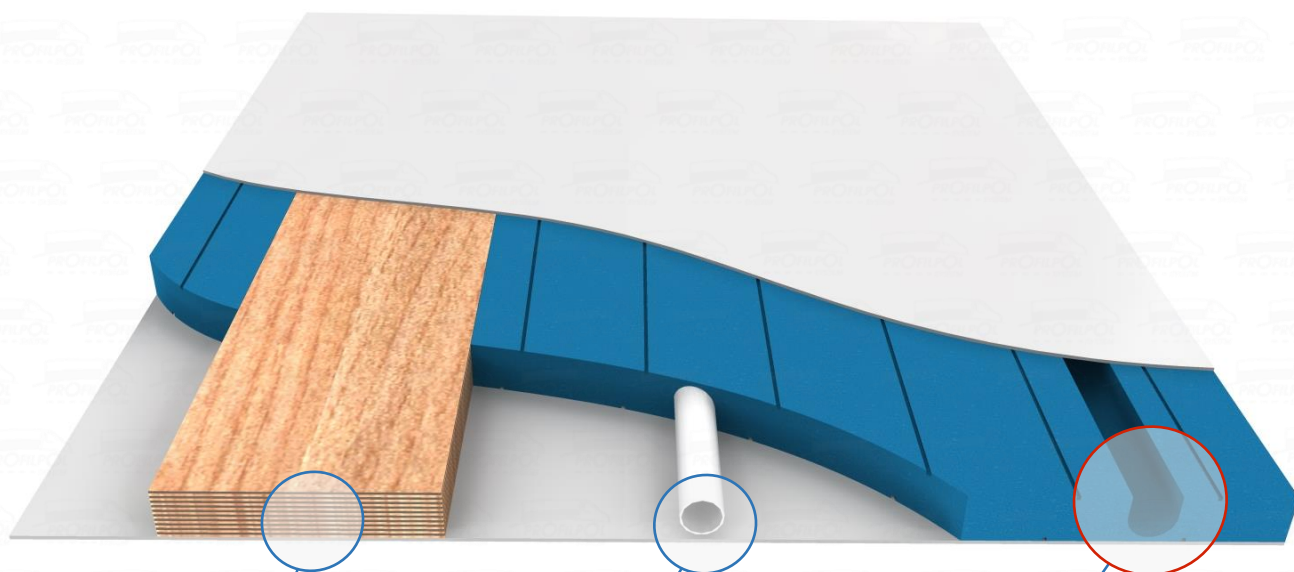
Laminate developed specifically for applications with high visual demands. It has a smooth surface with a slightly visible internal fiber structure. It is covered with a high quality gelcoat that protects the product against UV radiation. The laminate is attested for food contact. Available laminate thickness 1,5 or 2 mm.

4

Bubble structure laminate



Equipment of the panels

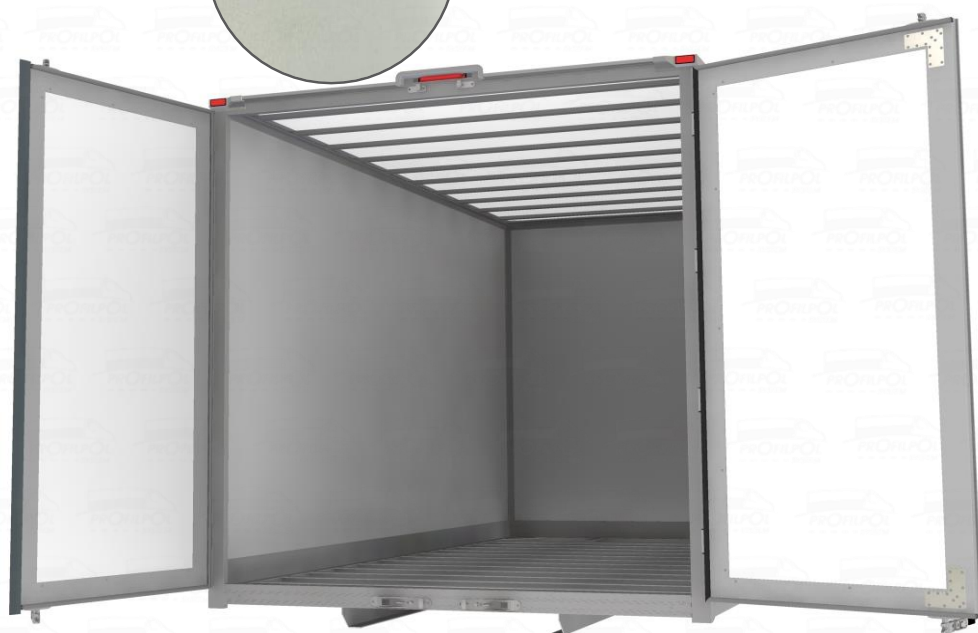
**A****Plywood reinforcement****B****Cable channel with tube****C****Channel for locker bars without tube****A****B****C**

If needed panels could be equipped with plywood reinforcements to mount hinges, joints, handles on them or with channels for cables and bars.



Laminate for shining roofs

Translucent roof laminate – it allows light to flow through and to illuminate the interior of the container.



Technical data

Panel thickness	Weight kg/m^2	Available laminate thickness	Maximal panel dimensions
24 mm	5,5*	1,5 mm or 2 mm	2,8 m x 8,8 m
34 mm	5,8*		
44 mm	6,3*		
54 mm	6,7*		
64 mm	7,1*		
84 mm	7,9*		
Translucent roof laminate	2,1	1,5 mm	

* theoretical weight for panel with 1,5 mm laminate and standard XPS filling

Notes



PROFILPOL
-----**SYSTEM**



www.profilpolsystem.pl



sprzedaz@profilpolsystem.pl



OLESNO
ul. Częstochowska 20
46-300 Olesno



+48 883 335 994